











### What is the RMF Eco Range?

The RMF Eco Range has been available for over 10 years and is simply reused raised access floor panels, detackified by RMF of previous carpet adhesive, installed onto new all steel pedestal understructure, suitable for carpet overlay and fully warranted.

## Top 10 RMF Eco Range Facts

	RMF are the original and world's largest recycled raised flooring company.		RMF are the first globally to hold an Environmental Product Declaration (EPD) for reused raised access flooring.
	RMF complete random in-house testing of second user panels.		RMF Eco Range fully installed systems come with an automatic RMF 25 year system warranty. (original manufacturer warranty not extended)
	All RMF Eco Range panels are individually inspected and pre-cleaned prior to installation at our facility, not site cleaned.*		Over 1million m <sup>2</sup> of RMF Eco Range panels supplied and installed by RMF.
	82% carbon reduction versus new raised floor based on a 20,000m <sup>2</sup> project. (Arup individual project data available on request).		All RMF Eco Range PSA panels are of original Medium Grade MOB PF2/PS-SPU manufacture.
	All RMF Eco Range panels are installed onto new all steel PSA MOB PF2/PS-SPU performance pedestals.		Significant cost savings are available compared to new raised floor systems.

\* On site panel cleaning is only 100% effective if all panel sides are cleaned of previous residual carpet adhesive. Panels cleaned in situ may result in difficulty to lift and access the floor void for future. We use our D-tac operation to clean panel surfaces and sides to every panel processed.

# Warranty only valid when a full RMF Access Floor system including panels and understructure is installed.

## RMF Eco Range - Saving the planet one panel at a time



Panel Thickness	Point Load 25mm <sup>2</sup>	Load over 300mm <sup>2</sup>	Uniformly Distributed Load (UDL)
26mm	3.0kN	4.5kN	8.0kN
29mm	3.0kN	4.5kN	8.0kN
31mm	3.0kN	4.5kN	8.0kN

## Panel Description

The RMF Eco Range panels can be either 26mm, 29mm or 31mm thick gravity lay or screw down (subject to availability). All panels are originally manufactured fully galvanised steel encased with high density particle board core.



Want to be fully circular with an existing raised floor?  
**Ask us how.**



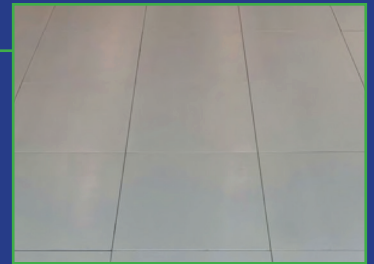
Work with the best, we have a combined industry knowledge of over 100 years.

## Want carbon savings without compromise?



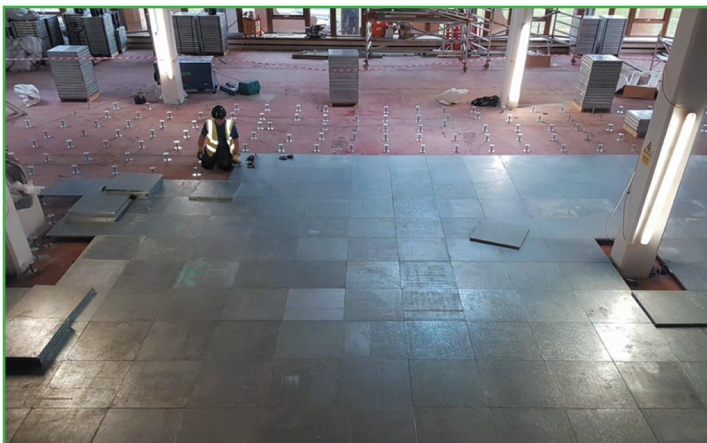
### RMF E-Coated system.

All refurbished panels can be visually enhanced in-house with our bespoke low VOC paint. The E-Coated system maintains the low carbon footprint with the added benefit of improved aesthetics, ideal for CAT A fit outs.



## RMF Eco Range in action

### Examples of previous RMF Eco Range projects



#### London

- White City
- 50 Finsbury Square
- Wework, Shaftsbury Avenue
- The Forge, Sumner Street
- Sony, Paddington

#### Manchester

- Ingeus
- Project Noma
- Affinity Living
- Windemere House
- Lakeside

#### Birmingham

- BT Snowhill
- Alpha Tower
- Fort Dunlop
- Temple Row
- Newhall Street

#### Bristol

- BT Bristol
- 1 Linear Road
- The Quorum
- The Generator Building
- Bizspace

**RMF Eco Range - Saving the planet, one panel at a time!**