

# **butech®**

**RMF – Sole UK suppliers of**

**CLI-KER raised floor**

**By**

**PORCELANOSA Grupo**



**butech®**

BY APPOINTMENT TO  
HER MAJESTY THE PRINCESS OF WALES  
MANUFACTURER AND DISTRIBUTOR  
OF CERAMIC TILES AND BUILDING PRODUCTS  
PORCEFAZIOSA GROUP LIMITED





**RAISED MODULAR  
FLOORING**

[www.rmfservices.co.uk](http://www.rmfservices.co.uk)



# CLI-KER n<sup>®</sup>

Automatic Installation System

**RMF – CLI-KER dry installation floor**

New ceramic pavement system placed dry, without use of adhesives or joints, for indoor use. Quick and easy installation, accessible, recoverable, wide range of finishes and minimal maintenance. Quick come into service, once placed it is ready to transit on it. Coating for pavements of dry inside areas in premises of individual or collective use:

- buildings of offices.
- uildings of public use (administration, culture, museums, cinemas, etc ...)
- Shopping centers.
- Hotels.
- Showrooms.
- Shops.

Norm	testing method	system
UNE10545-3	length	598+-0,2mm
	width	598+-0,2mm
	thickness	16+-0,2mm
	water absorption	0,10%
UNE10545-4	Breaking module	3,87 Mpa
	Breaking strenght	3,47 kN
	Deflection	2,5 mm
UNE10545-8	Linear thermal expansion	2,5837E-05
UNE53130	Hardness shore (polyurethane)	Method A 92
	Density (polyurethane)	1210 kg/m <sup>3</sup>



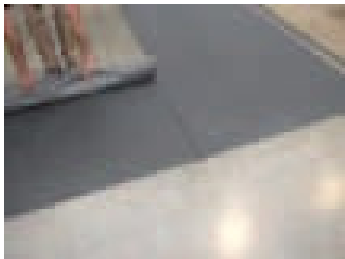
# installation

## foregoing considerations

- The support must be dry, free of dirt, construction debris or irregularities.
- Check that the irregularity does not exceed 1.5 mm every rule of 2 m. The accumulated irregularity shall not exceed the deflection of the piece.  
There will be a previous rethink taking as origin the intersection of 2 offset axis. It will be previously installed all the pavement with locks of 5 mm high.
- There will be a taking of levels later and a visual inspection verifying that the pavement is firm, smooth and without lipping of tiles. It is possible the devasting of the base of polyurethane for surface leveling.
- It must be left a perimeter joint of 0,5 cm, which will be hidden once placed the skirting board.
- In addition to the components supplied for placement, we must have pliers, cutter, machine of ceramic cutting and rubber mallet.

## installation steps

- First of all, you must check that the bracket fulfills the minimum requirements to put the cli-ker n described above.
- From that moment on you'll have to follow next steps:



**Step 1:**  
We cover the area to be paved with leveling sheet.



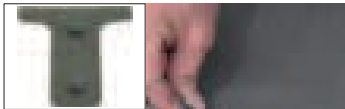
**Step 2:**  
Use tape to seal the joints between sheets.



**Step 3:**  
Fix the catch on the piece that is going to be laid.  
Then we put the piece on the leveling sheet placed on the floor.



**Step 4:**  
Repeat the process with the help of a rubber mallet to fit the pieces until covering all the area.



**Step 5:**  
Use a level to place all the pieces appropriately.  
Plots are put on the catches to help levelling the floor.



**Step 6:**  
Close to walls or columns, catches should be cut with a cutter or pliers, to join pieces and level them with that wall or column.



**Step 7:**  
In case that it is required cutting the pieces, we will use a ceramic cutting machine.  
Once the piece is marked with ceramic cutting machine, in case of being the buttons of ceramics on the optimistic side, we will review the trimmings with a radial provided that necessary, then through a dry knock we split the piece.





#### Step 8:

When cutting the piece, we will lose the mechanized of the corner in which to place the lock.

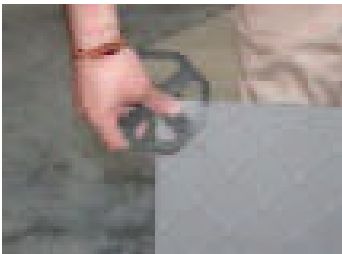
For these purposes we will use some plugs of polyurethane, placing as many as necessary, fitting and sticking them on the basis of polyurethane.

\* For the installation of screens on the system, it will be used a plug of polyurethane for proper fixation, protecting the ceramics with the same.



# RMF Cli-ker dry installation floor

Because RMF cli-Ker is a lift-up tile system, the tiles can be swiftly and easily changed if needed.



The tiles click into place thanks to a simple tongue and grooved backing system.



Close-up of how the tiles fit together.



In this way, you can gain access to the under-floor area just by lifting up a tile.



# RMF – Cli-ker components

The piece made in factory consists of the following:

- Ceramic tile or porcelain of groups Blb and Bla as ISO 13006 and NF-EN 14411 of Porcelanosa Grupo.
- Joint of polyurethane of 1 mm wide available in gray.
- Base of polyurethane two-component rigid with cracks in the 4 corners shaped blade.

Additional elements for placement are:

- Pieces of union, locks in the form of blade of 5 mm height in polyurethane.
- Pieces of regulation or compensation; rises and plugs of polyurethane, for leveling of the system. Thicknesses of 0.5 - 1 mm for the rises and 5 mm for the plugs.
- Leveling sheet viscoelastic and acoustic attenuation.



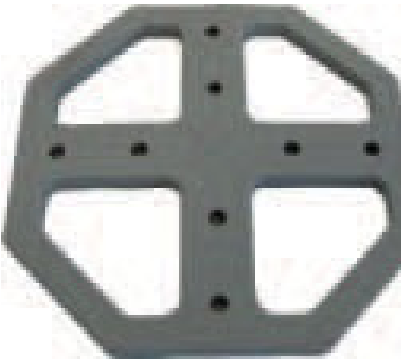
Cli-ker n piece 598x598 mm.



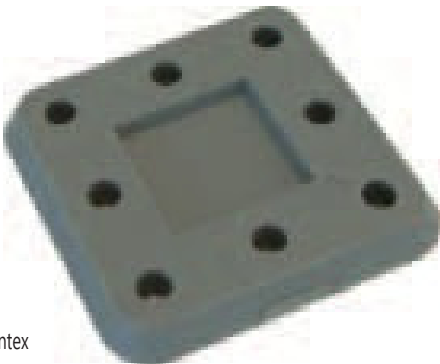
Levelling sheet



Cintex



Catches. 5 mm high



Plug . 0,5 mm high



Plug. 0,5 - 1 mm high.

# RMF Cli-ker advantages

- Quick and easy installation.
- Clean.
- Accessible.
- Reusable.
- Wide range of finishes.
- Minimum maintenance.
- Quick come into service, once placed it is ready to transit on it

## references

SAP	KEA	description
100096030	B81200209	alza cli-ker n 0,5mm
100096031	B81200207	alza cli-ker n 1mm
100096038	B81200208	taco cli-ker n 5mm
100102785	B81200228	traba cli-ker n esp 5mm
100103280	B15901003	lámina nivelacion cli-ker n (9mt²)





## How to receive a quotation for a RMF Cli-ker system?

- To provide you with the best service, you should provide us the plans of the project customized to your product, please email to [estimating@rmf-services.co.uk](mailto:estimating@rmf-services.co.uk)
- Or complete our quote request document on our website [www.rmfm-services.co.uk](http://www.rmfm-services.co.uk)
- Please provide as much information as possible to obtain the most accurate quotation possible.

PORCELANOSA





**RAISED MODULAR  
FLOORING**

**Head Office:**  
Hangar One  
Harbury Lane Leamington Spa  
CV33 9SA  
T: 01926 425289 F: 01926 451562

[www.rmfservices.co.uk](http://www.rmfservices.co.uk)

