



## RAISED MODULAR FLOORING

### Performance & Technical Specification

<b>Size</b>	600 x 600mm
<b>Thickness (Nominal)</b>	26mm
<b>Weight (Typical)</b>	9Kg
<b>Core</b>	High Density Chipboard
<b>Casing</b>	Corrosion Resistant Galvanised Steel

### Performance

#### PSA MOB PF2 PS/SPU – Medium Grade

<b>Point Load</b>	3 kN(25mm <sup>2</sup> )
<b>Uniformly Distributed Load</b>	8 kN/m <sup>2</sup>

### Floor Finish

RMF Titan panels are provided bare to accept a wide range of loose lay carpet tile floor coverings

### Accessories

Pedestals - HD (standard) Range.  
Performance certification is only issued when using the RMF gravity lay panels with RMF HD pedestals.

### Other Accessories

<b>Gaskets</b>	<b>Foil Tape</b>
<b>Adhesive</b>	<b>Foam Tape</b>

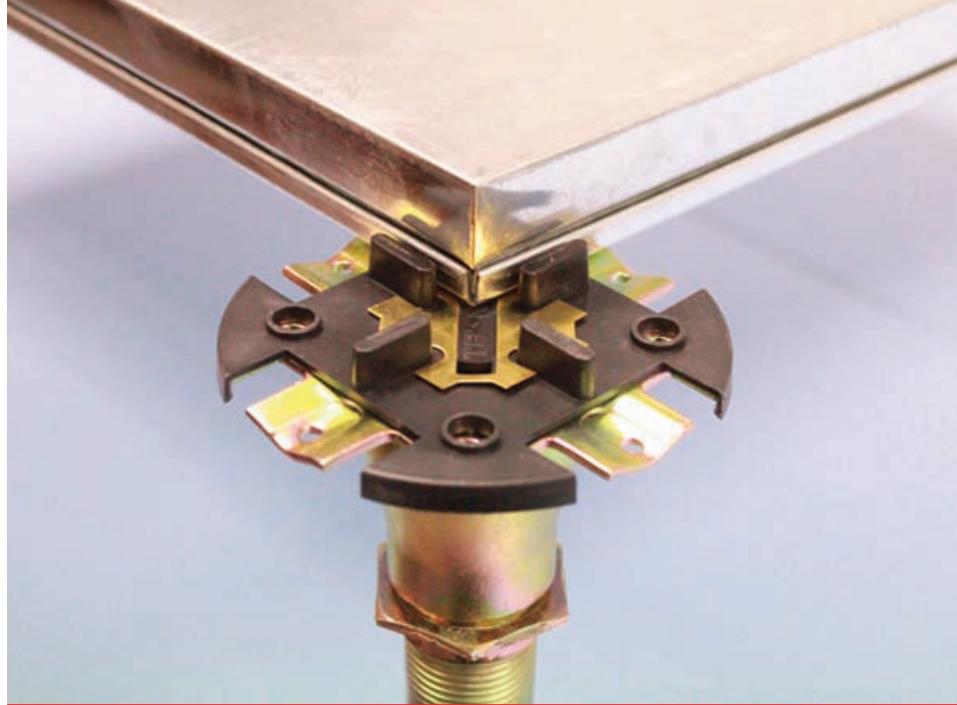
### Specify As

RMF Titan Gravity Lay PSA medium grade access flooring panel, 600 x 600 x 26mm, with high density chipboard core encapsulated in corrosion resistant galvanised sheet steel, featuring unique stitched edge detail for greater strength and durability, manufactured to meet PSA MOB PF2 PS/SPU medium grade.

### Product Codes

<b>Order Code</b>	<b>Titan Gravity Lay PSA</b>
<b>Description</b>	600 x 600 x 26mm Medium Grade Bare Steel Encapsulated Gravity Lay Panel

- RMF Established in 1988
- Nationwide Contracting
- Supply and Installation
- Spares and Repairs
- Modifications and Refurbishments
- Maintenance and Service
- Products always in stock



## RMF Titan Gravity Lay 26mm PSA MOB PF2 PS/SPU

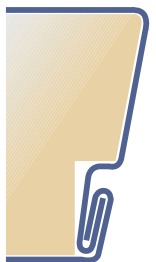
The RMF Titan Gravity Lay MOB PF2 PS/SPU panels are amongst the most technically advanced available today, combining high performance structural materials and innovative manufacturing technology.

RMF Titan panels consist of fully encapsulated in corrosion resistant galvanised steel with a high performance core. Die formed top and bottom sheets which are then mechanically interlocked and post formed in a fully automated manufacturing process.

The RMF Titan panels have a unique six fold edge detail incorporating a recessed interlocking fold which gives exceptional tensile rigidity translating to lesser deflections at higher loads when tested to international standards.

RMF Titan panels are also available as a Corner Lock system with or without head gaskets.

- > Manufactured to achieve PSA MOB PF2 PS/SPU
- > Unique design
- > Solid feel underfoot
- > Corrosion resistant
- > Supplied bare to accept any appropriate loose lay floor covering
- > Tested with HD pedestals to a 600mm void height.



(Edge Profile)

RMF operates a policy of continual development and reserves the right to change specification without prior notification.

For full details of other vinyl colours, plus carpet and laminate coverings, please contact RMF.

DISTRIBUTED FROM THE MIDLANDS

